



Cabinet fans especially designed for use and distribution of heat produced by fireplaces, suitable for continuous extraction of airstreams at temperatures up to 180° C.

All casings are manufactured in galvanised sheet steel with thermal insulation.

Provided with a thermostat sensor located on the cabinet 0-90°.

**Motors**

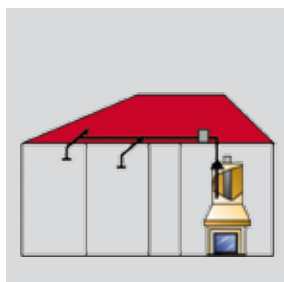
Available with single phase motor 230V 50Hz, adjustable.

**Applications**

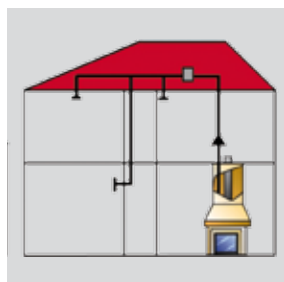


For use and distribution of heat produced by fireplaces

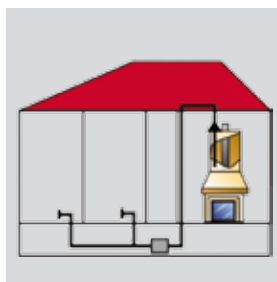
**Optimise the heating from a closed place**



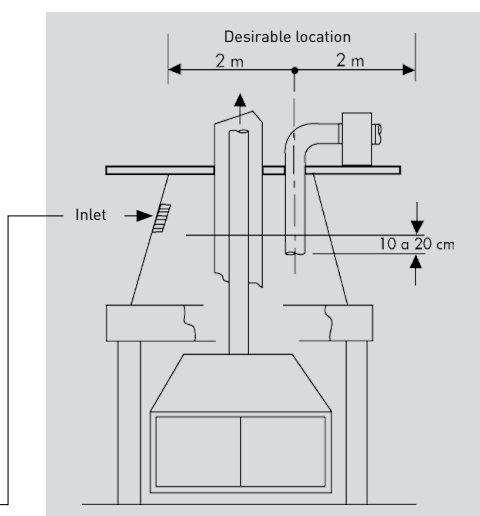
Attics of a house with one floor



Attics of a house with floors



Sanitary basement



**Surface of the inlet S(m2):** \_\_\_\_\_

$Q \div 3600 \div V$

If we consider a collection speed 2 m/s,

$S \text{ (model 400): } 400 \text{ m}^3/\text{h} \div 3600 \text{ s/h} \div 2 \text{ m/s} = 0.056 \text{ m}^2 = 560 \text{ cm}^2$

$S \text{ (model 600): } 600 \text{ m}^3/\text{h} \div 3600 \text{ s/h} \div 2 \text{ m/s} = 0.084 \text{ m}^2 = 840 \text{ cm}^2$

### TECHNICAL CHARACTERISTICS

Model	Power (W)	Speed (rpm)	Current (A)	Speed controller	Built-in thermal protection	Outlet Ø (mm)	Airflow (m³/h)
CHEMINAIR 400	65	1100	0,29	•	•	125	400
CHEMINAIR 600	100	1050	0,45	•	•	160	600

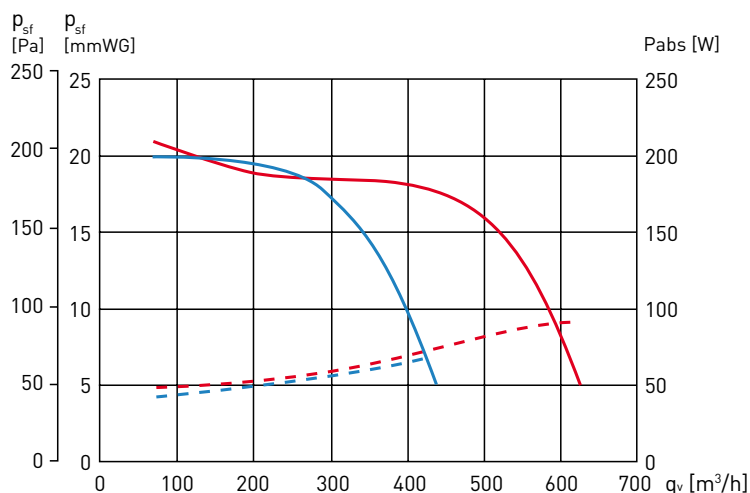
### ACOUSTIC CHARACTERISTICS

Sound power spectrum in dB(A), at the fan inlet and outlet, at 3 working points of the performance curve.

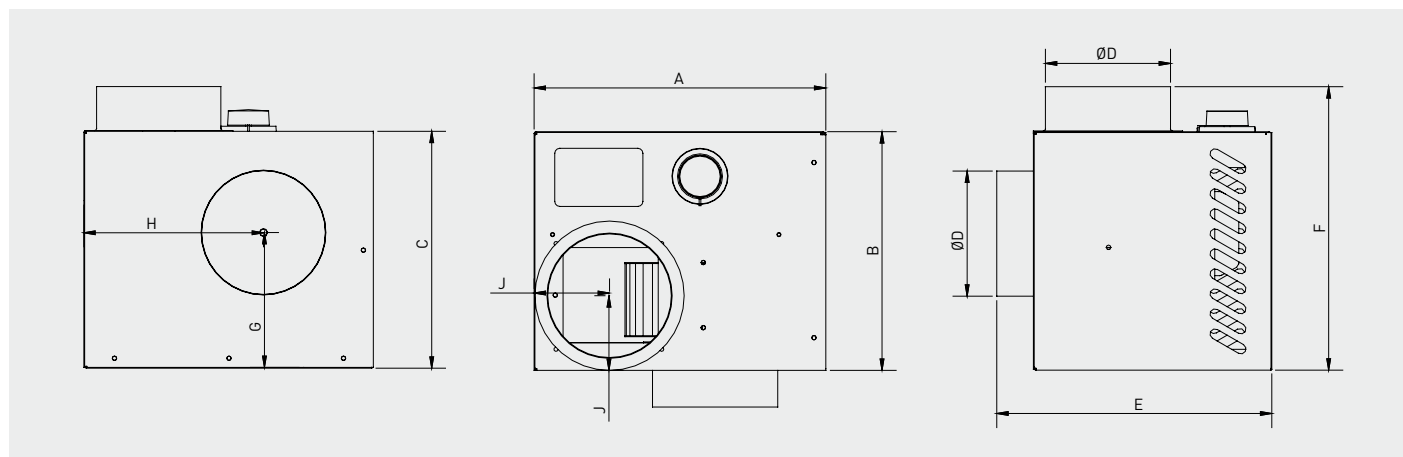
CHEMINAIR 400											CHEMINAIR 600										
	63	125	250	500	1000	2000	4000	8000	GLOBAL		63	125	250	500	1000	2000	4000	8000	GLOBAL		
Inlet	400 m³/h	35	43	51	53	56	54	51	47	60,7	400 m³/h	40	51	57	55	57	55	53	46	63	
	250 m³/h	35	45	50	50	52	50	47	42	57,5	250 m³/h	37	49	56	52	55	53	50	42	61	
	100 m³/h	38	46	52	48	51	49	45	38	57,1	100 m³/h	40	49	53	53	56	52	49	41	60,6	
Outlet	400 m³/h	35	41	56	58	62	56	53	48	65,2	400 m³/h	39	48	64	62	62	58	54	47	68,3	
	250 m³/h	35	41	57	56	59	53	49	44	63	250 m³/h	36	46	62	60	61	55	50	44	66,4	
	100 m³/h	38	40	57	56	57	51	47	40	62	100 m³/h	39	48	59	58	59	53	49	42	64,1	
Radiated	400 m³/h	29	39	46	48	48	38	36	34	52,5	400 m³/h	33	45	57	52	51	40	36	29	59,3	
	250 m³/h	29	39	47	46	45	35	32	30	51,2	250 m³/h	30	43	55	50	50	37	32	26	57,5	
	100 m³/h	32	38	47	46	43	33	30	26	50,7	100 m³/h	33	45	52	48	48	35	31	24	55,2	

### PERFORMANCE CURVE

- $q_v$ : Airflow in m³/h.
- $p_{sf}$ : Static pressure in mmWG and Pa.
- Dry air at 20°C and 760 mmHg.
- Performance data in accordance with ISO 5801 and AMCA 210-99 Standards

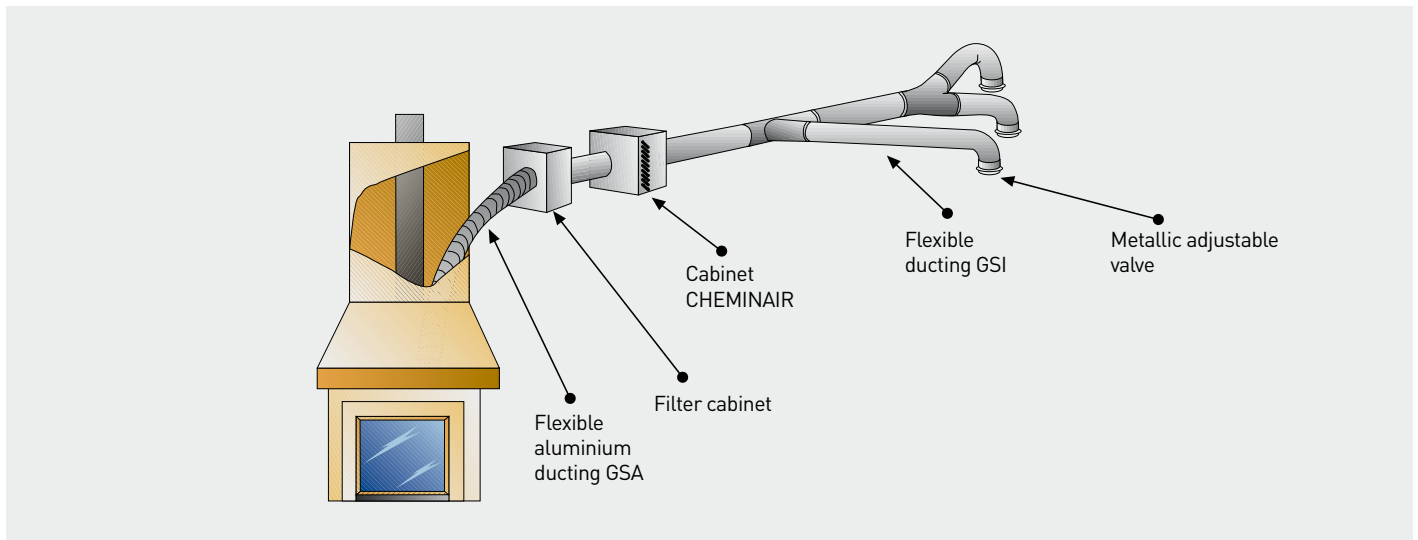


### DIMENSIONS (mm)



Model	A	B	C	ØD	E	F	G	H	J	Weight (kg)
CHEMINAIR 400	292	238	238	125	275	283	136	180	75	6
CHEMINAIR 600	343	278	258	160	315	283	154	214	92	7,7

ACCESSORIES



**FILTER CABINET**  
Spare filter.



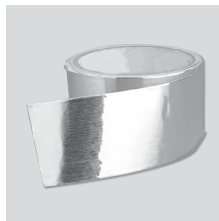
**GSA**  
Flexible aluminium ducting.



**GSI**  
Flexible ducting.



**BIR**  
Adjustable supply valve.



**BA**  
Aluminium duct tape.



**REB**  
Single phase electronic speed controller.